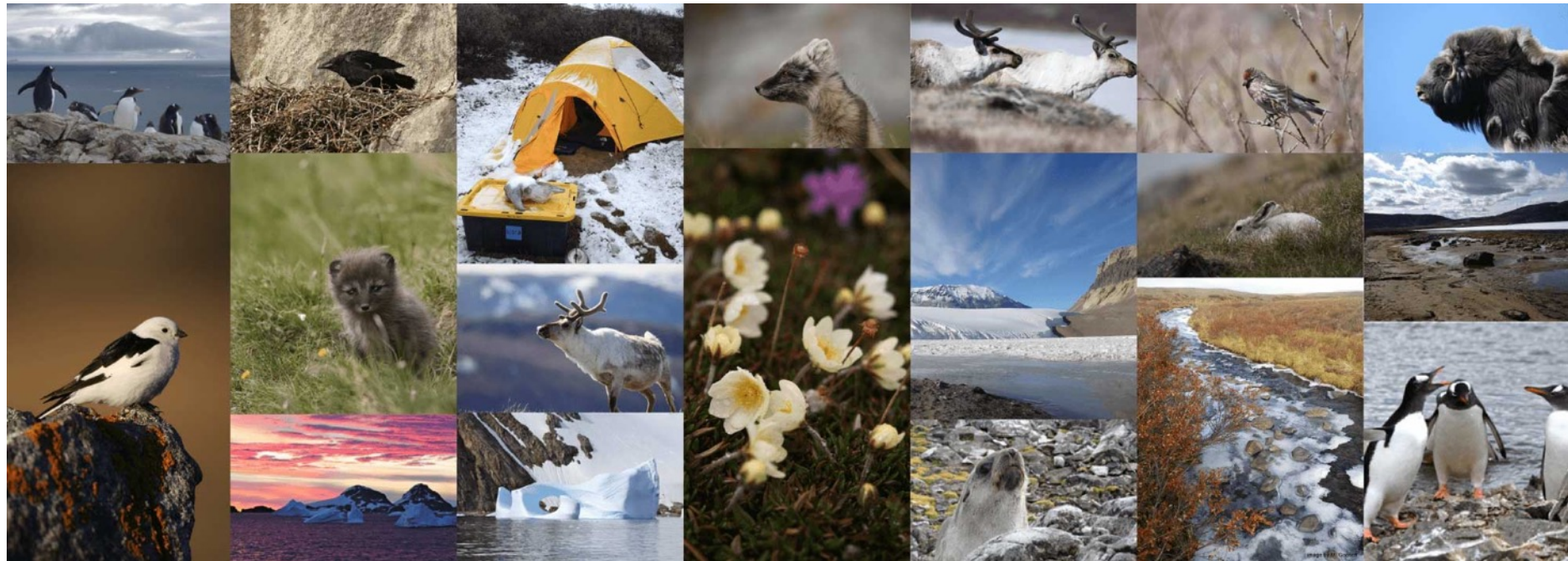


# Optics of The Poles

A Visual Expression of Polar Research at Penn State



Artwork needs to initiate in an interpretation of one or more of the provided word clouds.



# A Juried Exhibit

Jury of selection and awards will consist of members of The Polar Center Steering Committee. Work will be selected from digital images.

- Awards for **FIRST PRIZE** (\$400), **SECOND PRIZE** (\$300), **THIRD PRIZE** (\$200)
- Location of Exhibit: **THE ART ALLEY IN THE HUB**, University Park Campus
- Who is Eligible: Penn State **UNDERGRAD AND GRAD STUDENTS** associated with the visual arts.
- Submission is free. Max two entries/person. Only **2D PIECES** of work may be accepted.

[www.polar.psu.edu](http://www.polar.psu.edu)



# Deadlines

- For submission of work: *December 1, 2015*
- Notification of acceptance: *December 7, 2015*
- Awards will be chosen after installment in the Art Alley.
- Delivery Date: January 14, 2016
- Exhibit Opens: *January 25, 2016*
- Exhibit Closes: *March 6, 2016*
- Pick up date: *March 7 + 8, 2016*
- Reception: *Tuesday, February 9, 2016*









## Wordcloud 4

MICHAEL SHERIFF, PH.D.

Assistant Professor of Mammalogy and Ecology,

*Department of Ecosystem Science and Management, University Park*